



7005 Georgia Street
Chevy Chase, MD 20815

Offered at \$869,000



www.mcneaney.com

4315 50th Street, NW
Washington, DC 20016
202-552-5600
fax 202-552-5605

ANSLIE STOKES
202.270.1081
WWW.STOKESREALTOR.COM

Specializing in the marketing of fine residential properties.

3005 Georgia Street - Chevy Chase, MD 20815

Welcome to 7005 Georgia Street! Located in Chevy Chase's coveted Section Three neighborhood, this charming bungalow home sits on tree-lined Georgia Street and is conveniently located between Connecticut Avenue and Brookville Road.

Built in 1926, this home retains much of its original character with convenient updates throughout.

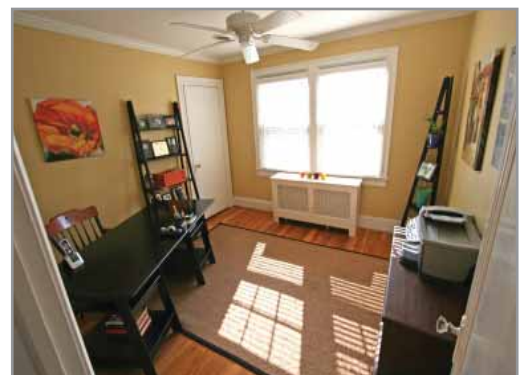
The large covered front porch has ample room for a sitting area. Step inside and you'll discover a large living room with plaster moldings, high ceilings, a wood burning fireplace and beautiful hardwood floors. The coat closet is tucked away in the living room for easy access and the side-hall staircase makes a dramatic statement.

The dining room also features plaster moldings and is awash in sunlight. A cozy sunroom is situated behind the dining room and is great for curling up with a good book. A powder bathroom is also tucked away in the sunroom.

The table-space kitchen has been updated with several new appliances, new recessed lights, new granite counter-tops and new cabinet hardware. A window over the sink floods the room with natural light. Step out the rear door and you'll find a new Trex deck with great space for a BBQ grill and entertaining. The level backyard offers room to play.

The second level will delight you with three sun-filled bedrooms, a newly renovated hall bathroom and a surprise en-suite half bathroom in the third bedroom. The attic, with pull down stairs on the landing, has tremendous storage space.

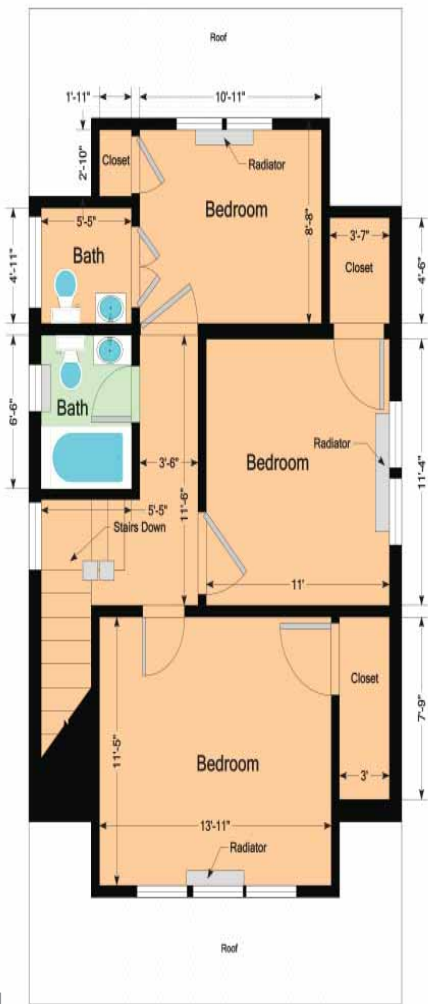
The fully finished lower level has a full bathroom, great storage and a kitchenette area. Double doors provide walk-out access to the side yard.



Main Level



Second Level



Basement



- Hardwood Flooring
- Carpet
- Ceramic Tile
- Unfinished Concrete



7005 Georgia Street
Chevy Chase, MD 20815

Subdivision: Chevy Chase Section Three

Year Built: 1926

Style: Bungalow

Water/Sewer: Public

Heat: Gas

CAC: Electric

Fireplace: Wood-burning

Taxes*: \$8,433.41

Elementary School: Rosemary Hills (PreK-2),
Chevy Chase Elementary (3-5)

Middle School: Westland

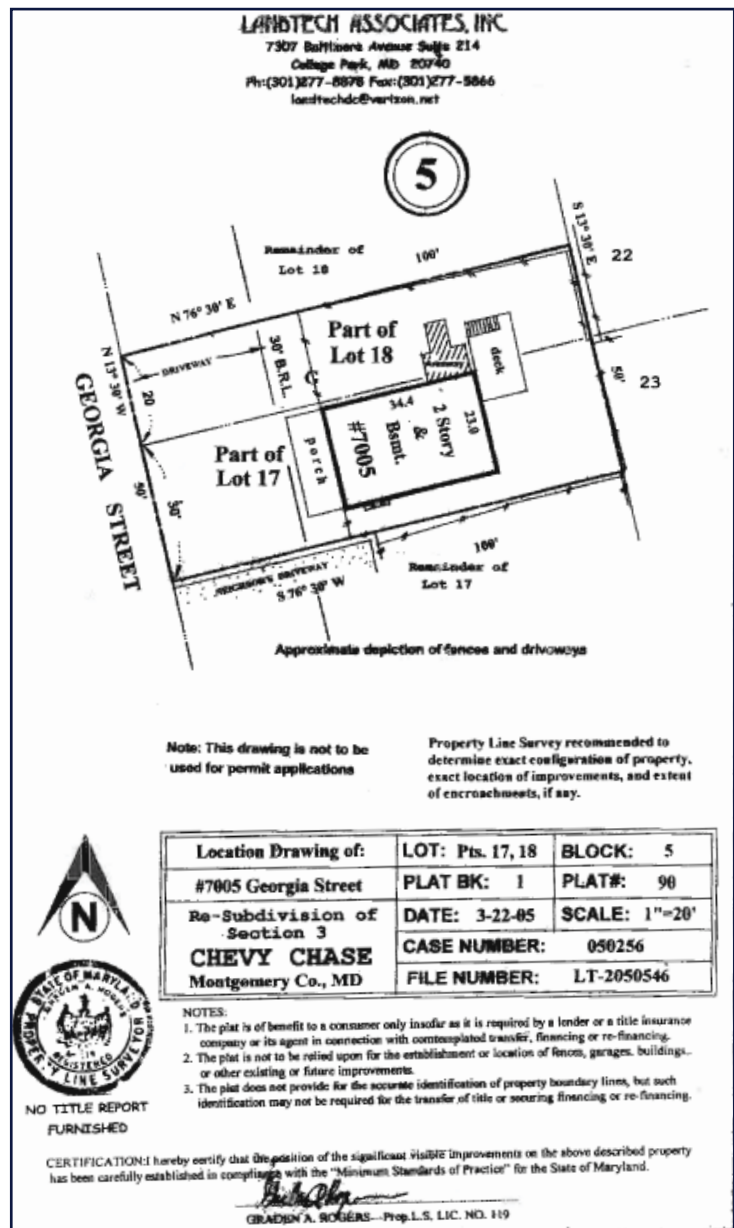
High School: Bethesda-Chevy Chase

Bedrooms: 3

Full bathrooms: 2

Half bathrooms: 2

*Real property estimated tax and other non-tax charges for first full year of fiscal ownership.



ansliestokes
202.270.1081
WWW.STOKESREALTOR.COM



www.mceearney.com

